

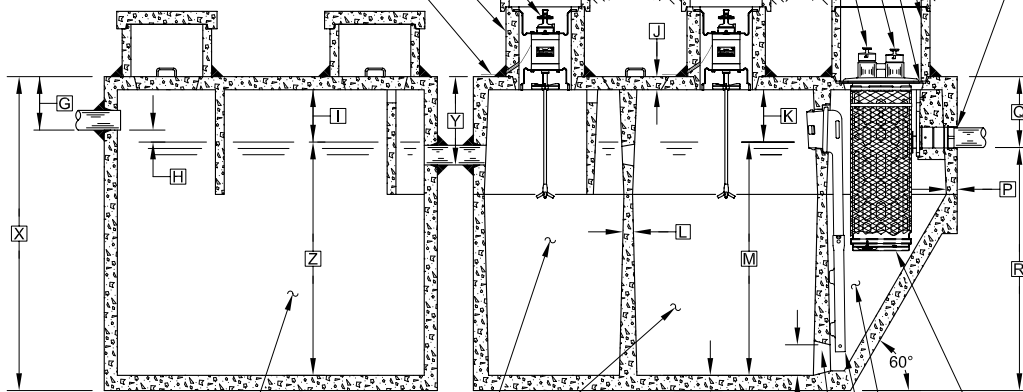
PLAN VIEW

EXTENDED AERATION CHAMBER

SINGULAIR® AERATOR
(SEE NOTE 1)

AERATOR MOUNTING CASTING

UNDERGROUND POWER SUPPLY ENTRANCE
(SEE AERATOR MOUNTING AND INSTALLATION
DETAIL DRAWING)



PRETREATMENT CHAMBER

EXTENDED AERATION CHAMBER

CAST-IN-PLACE AERATION
CHAMBER TRANSFER PORT

FINAL CLARIFICATION CHAMBER

BIO-KINETIC® SYSTEM
MOUNTING CASTING

BIO-KINETIC® SYSTEM
LOCKING LUGS

BIO-KINETIC® SYSTEM
MOUNTING CASTING AND COVER

BIO-KINETIC® SYSTEM
DISCHARGE DETAIL

SINGULAIR® TANK OUTLET COUPLING
TO 4" DIAMETER EFFLUENT LINE

NOTE: PRETREATMENT CHAMBER MINIMUM REQUIREMENTS
SHALL BE: 1,250 GALLONS CAPACITY, 16 GALLONS PER
INCH OF LIQUID LEVEL AND 12 INCHES OF FREEBOARD.

SECTION A-A

NOTE: SOME CRITICAL DIMENSIONS ARE
INTENTIONALLY LEFT BLANK TO BE FILLED
IN PER INDIVIDUAL JOB SITE SPECIFICATIONS.

NOTE: TOTAL SYSTEM CAPACITY: 2,850 GALLONS
RATED CAPACITY: 1,250 GALLONS PER DAY

GENERAL NOTES:

- ① SINGULAIR® AERATOR, AS TESTED AND ACCEPTED BY NSF, OPERATING 60 MINUTES ON / 60 MINUTES OFF.
- ② FALL THROUGH SINGULAIR® PLANT FROM INLET INVERT TO OUTLET INVERT IS FOUR INCHES. INLET INVERT IS TWELVE INCHES BELOW TANK TOP.
- ③ ON DEEPER INSTALLATIONS, PRECAST RISERS MUST BE USED TO EXTEND AERATOR MOUNTING CASTING AND BIO-KINETIC® SYSTEM MOUNTING CASTING TO GRADE. INSPECTION COVER ON PRETREATMENT CHAMBER MUST BE DEVELOPED TO WITHIN TWELVE INCHES OF GRADE.
- ④ TANK REINFORCED PER ACI STD. 318.
- ⑤ REMOVABLE COVERS ON RISERS WEIGH IN EXCESS OF SEVENTY-FIVE POUNDS EACH TO PREVENT UNAUTHORIZED ACCESS.
- ⑥ CONTACT THE LOCAL, LICENSED SINGULAIR® DISTRIBUTOR FOR ELECTRICAL REQUIREMENTS.

PROJECT ENGINEER'S APPROVAL:
I (WE) HEREBY CERTIFY THAT THIS
DRAWING HAS BEEN CHECKED AND IS
APPROVED FOR USE IN CONFORMITY
WITH THE CONTRACT DOCUMENTS.

DATE: _____

NAME: _____

CONTRACTOR'S CERTIFICATION:
I (WE) HEREBY CERTIFY THAT THIS
DRAWING HAS BEEN CHECKED AND IS
APPROVED FOR USE IN CONFORMITY
WITH THE CONTRACT DOCUMENTS.

DATE: _____

NAME: _____

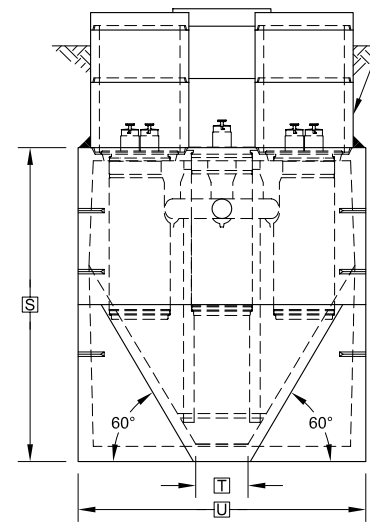
CRITICAL DIMENSIONS

A	1'-0"	N	0'-3"
B	2'-9"	O	0'-6"
C	2'-8"	P	0'-2 1/2"
D	3'-7"	Q	1'-4"
E	2'-3"	R	5'-8"
F	9'-3"	S	7'-0"
G	1'-0"	T	1'-0"
H	0'-3"	U	5'-6"
I	1'-0"	V	
J	0'-3"	W	
K	1'-0"	X	
L	0'-2"	Y	1'-8"
M	5'-6"	Z	

U.S. AND FOREIGN PATENTS PENDING		DATE: 6-25-07	REVISION: B
		DESIGNED BY: JMM	DATE: 2-16-06
© MMVII	<p>SINGULAIR® BIO-KINETIC® WASTEWATER TREATMENT SYSTEM MODEL TNT - 1250 GPD</p>	SCALE: NTS	<p>THIS DRAWING IS THE PROPERTY OF NORWECO. IT IS TO BE USED ONLY FOR THE PROJECT AND NOT BE COPIED OR REPRODUCED IN WHOLE OR IN PART WITHOUT WRITTEN PERMISSION FROM NORWECO.</p>

BIO-KINETIC® SYSTEM DISCHARGE DETAIL

BIO-KINETIC® SYSTEM MOUNTING
CASTING AND COVER



OUTLET END VIEW