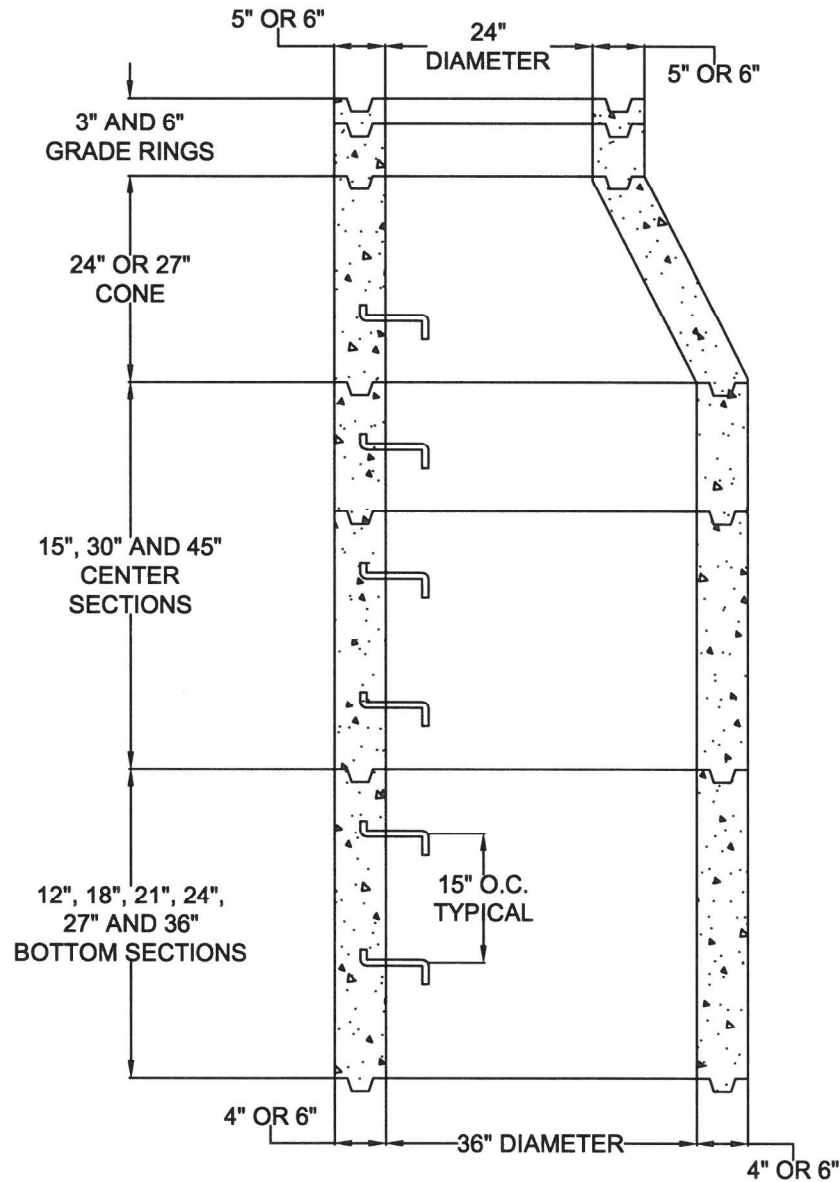


36" ID - SHAFTING & CONE DIAGRAM W/ GALVANIZED STEPS
.25" WIRE ON 6.55" C/L W/ 12 EA VERTICAL WIRE / EXCEEDS ASTM C-478
6 SACK TYPE II/V - 4000 PSI / 28 DAYS MINIMUM



JOB NAME:

MANUFACTURED BY
SOUTHWEST CONCRETE PRODUCTS

DESCRIPTION: 36" I.D SHAFTING & CONE 4" OR 6" WALL
W/ 24" OPENING
W/ GALVANIZED STEPS

DRAWING: #SCP3624GS

DATE: