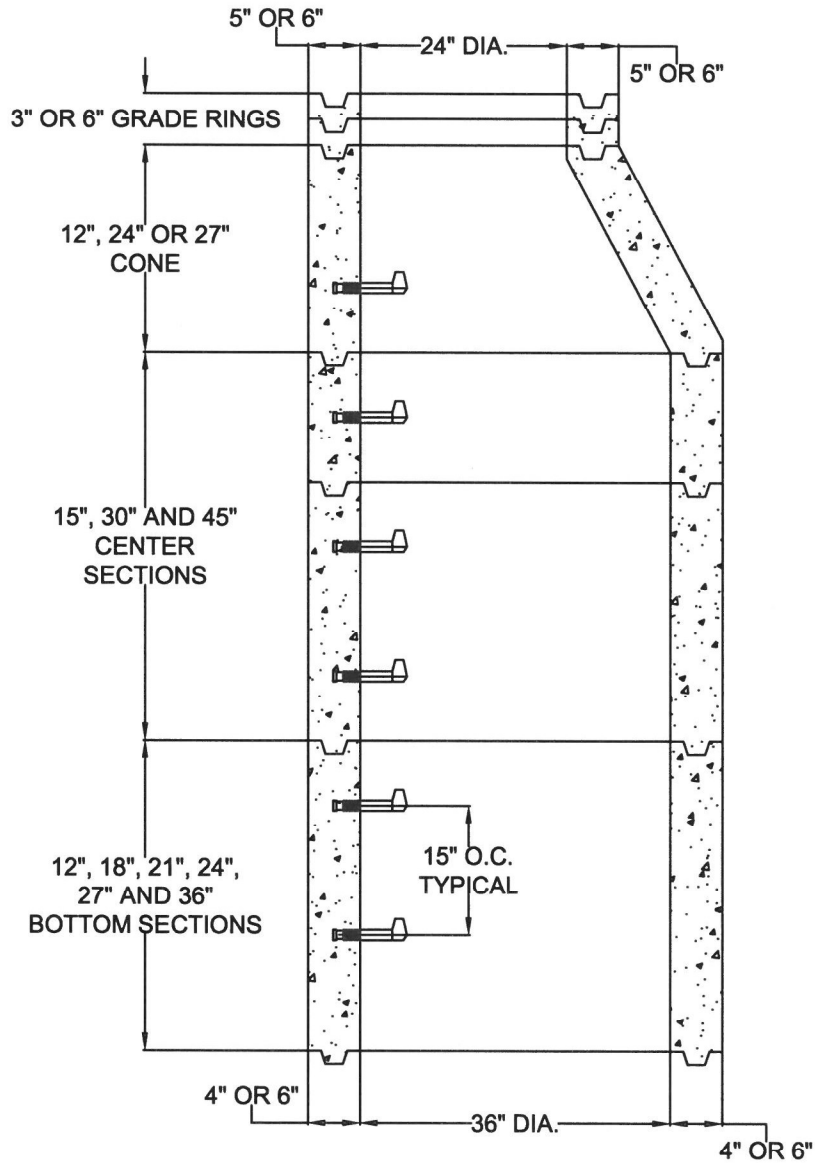


36" ID - SHAFTHING & CONE DIAGRAM W/ PLASTIC STEPS
.25" WIRE ON 6.55" C/L W/ 12 EA VERTICAL WIRE / EXCEEDS ASTM C-478
6 SACK TYPE II/V - 4000 PSI / 28 DAYS MINIMUM



JOB NAME:

**MANUFACTURED BY
SOUTHWEST CONCRETE PRODUCTS**

DESCRIPTION: 36" I.D SHAFTHING & CONE 4" OR 6" WALL
W/ 24" OPENING
W/ PLASTIC STEPS

DRAWING: #SCP3624PS

DATE: