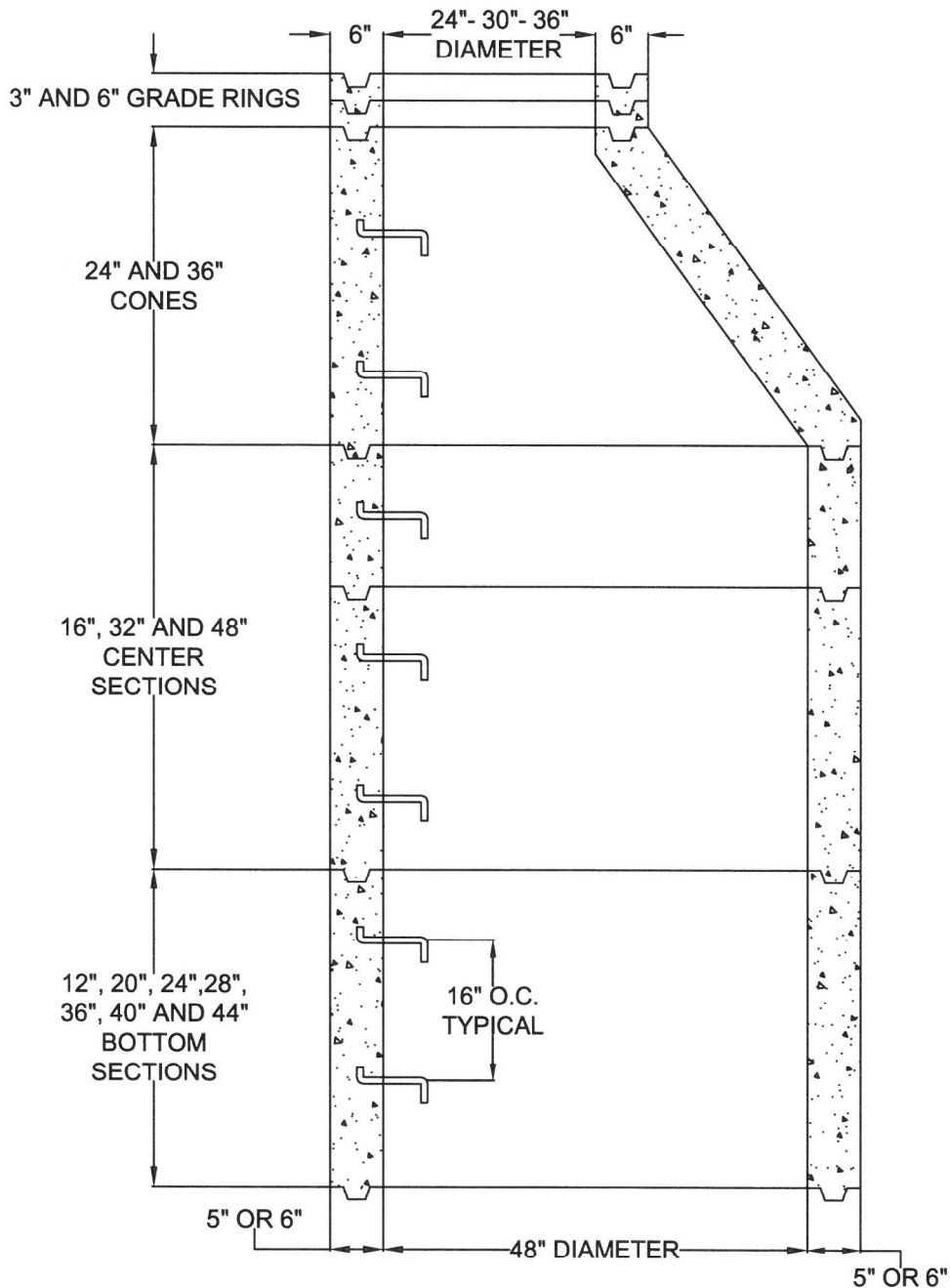


**48" ID - SHAFTING & CONE DIAGRAM W/ GALVANIZED STEPS**  
**.25" WIRE ON 4.91" C/L W/ 12 EA VERTICAL WIRE / EXCEEDS ASTM C-478**  
**6 SACK TYPE II/V - 4000 PSI / 28 DAYS MINIMUM**



**JOB NAME:**

**MANUFACTURED BY  
SOUTHWEST CONCRETE PRODUCTS**

**DESCRIPTION:** 48" I.D. SHAFTING & CONE W/ 5" OR 6" WALL  
W/ 24" - 30" - 36" OPENING  
W/ GALVANIZED STEPS

**DRAWING:** #SCP48GS

**DATE:**