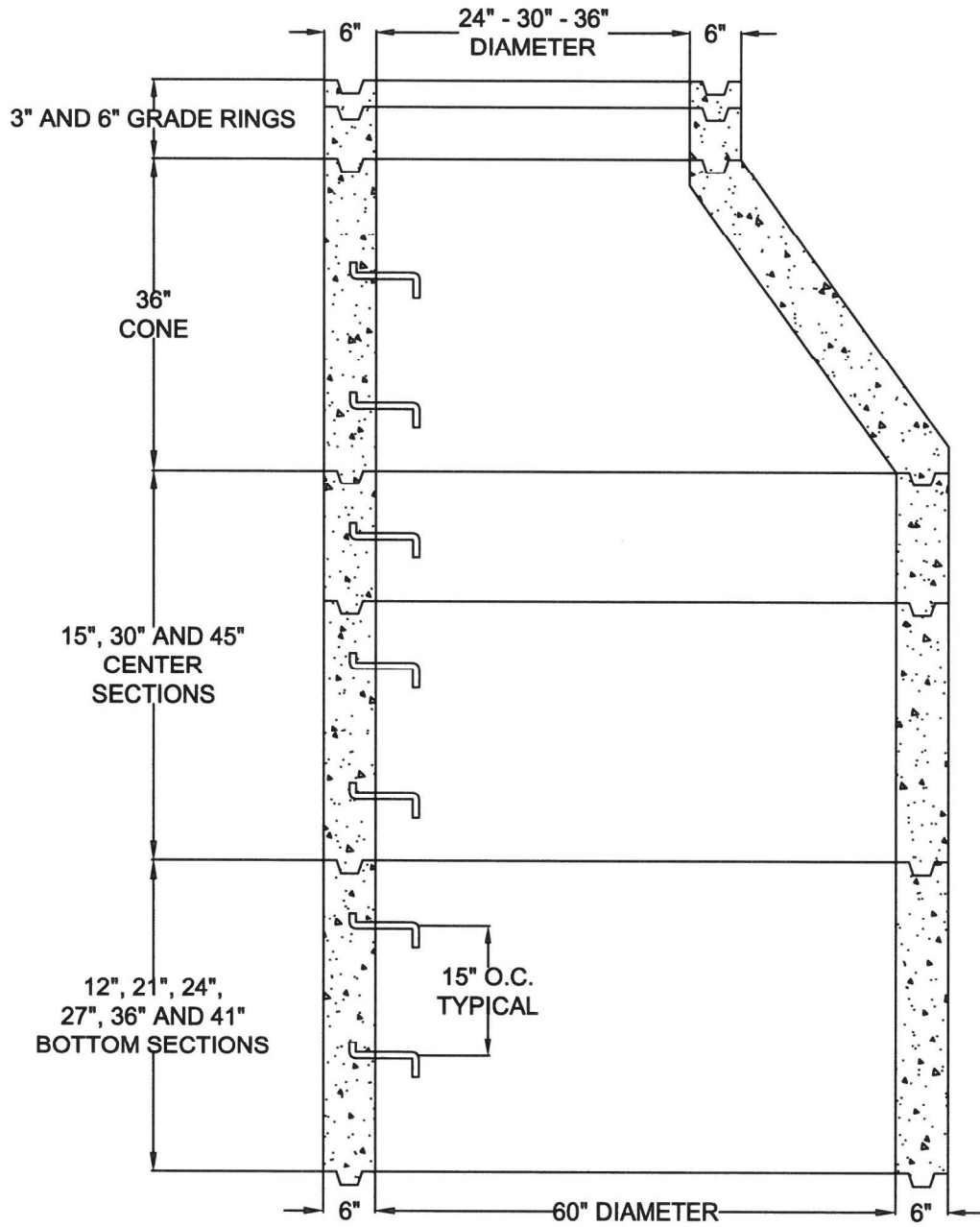


**60" ID - SHAFTING & CONE DIAGRAM W/ GALVANIZED STEPS**  
**.25" WIRE ON 3.93" C/L W/ 12 EA VERTICAL WIRE / EXCEEDS ASTM C-478**  
**6 SACK TYPE II/V - 4000 PSI / 28 DAYS MINIMUM**



<b>JOB NAME:</b>	<b>MANUFACTURED BY</b> <b>SOUTHWEST CONCRETE PRODUCTS</b>	
<b>DESCRIPTION:</b> 60" I.D SHAFTING & CONE 6" WALL W/ 24" - 30" - 36" OPENING W/ GALVANIZED STEPS	<b>DRAWING:</b> #SCP60GS	<b>DATE:</b>