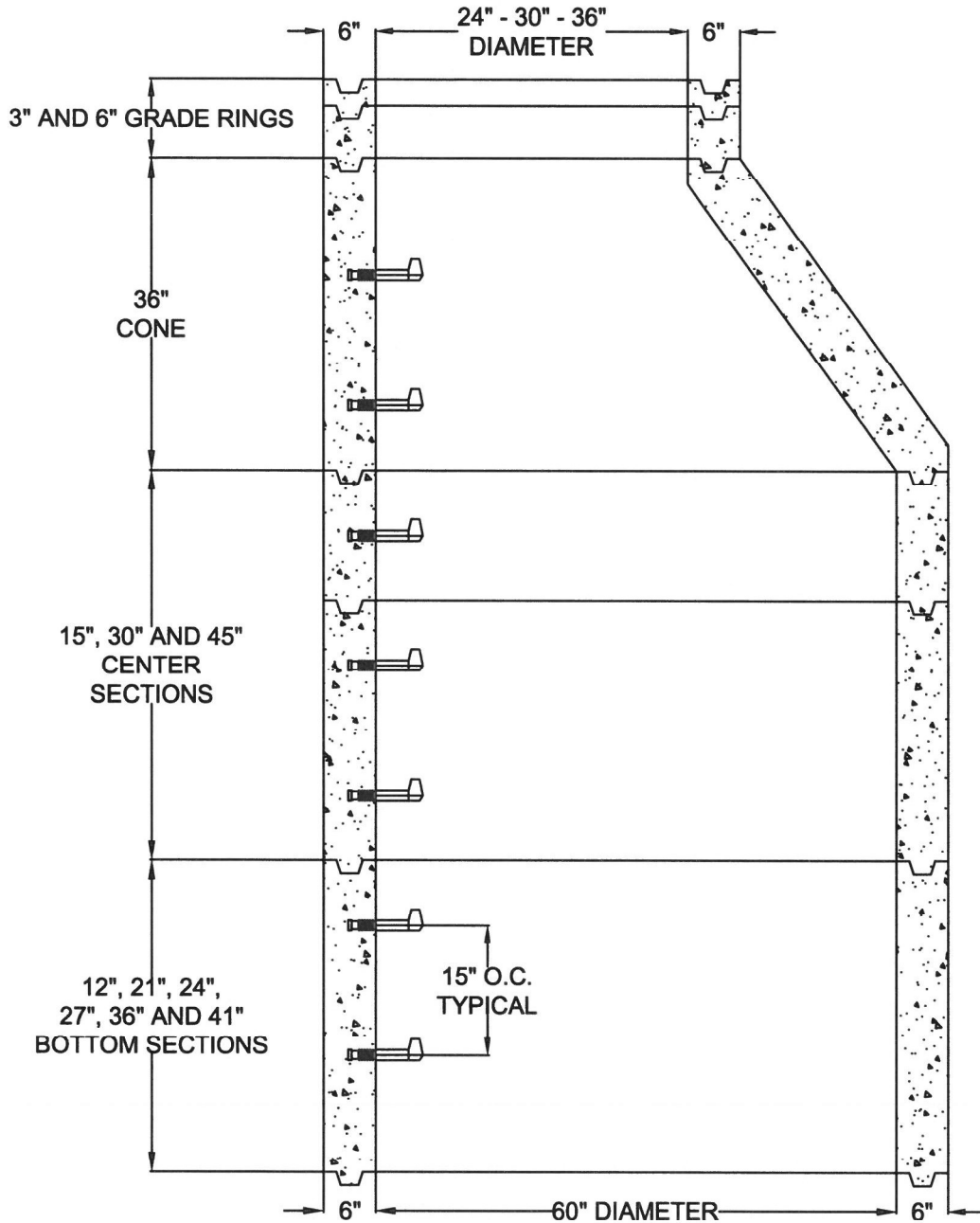


60" ID - SHAFTING & CONE DIAGRAM W/ PLASTIC STEPS
.25" WIRE ON 3.93" C/L W/ 12 EA VERTICAL WIRE / EXCEEDS ASTM C-478
6 SACK TYPE II/V - 4000 PSI / 28 DAYS MINIMUM



JOB NAME:	MANUFACTURED BY SOUTHWEST CONCRETE PRODUCTS	
DESCRIPTION: 60" I.D SHAFTING & CONE 6" WALL W/ 24" - 30" - 36" OPENING W/ PLASTIC STEPS	DRAWING: #SCP60PS	DATE: