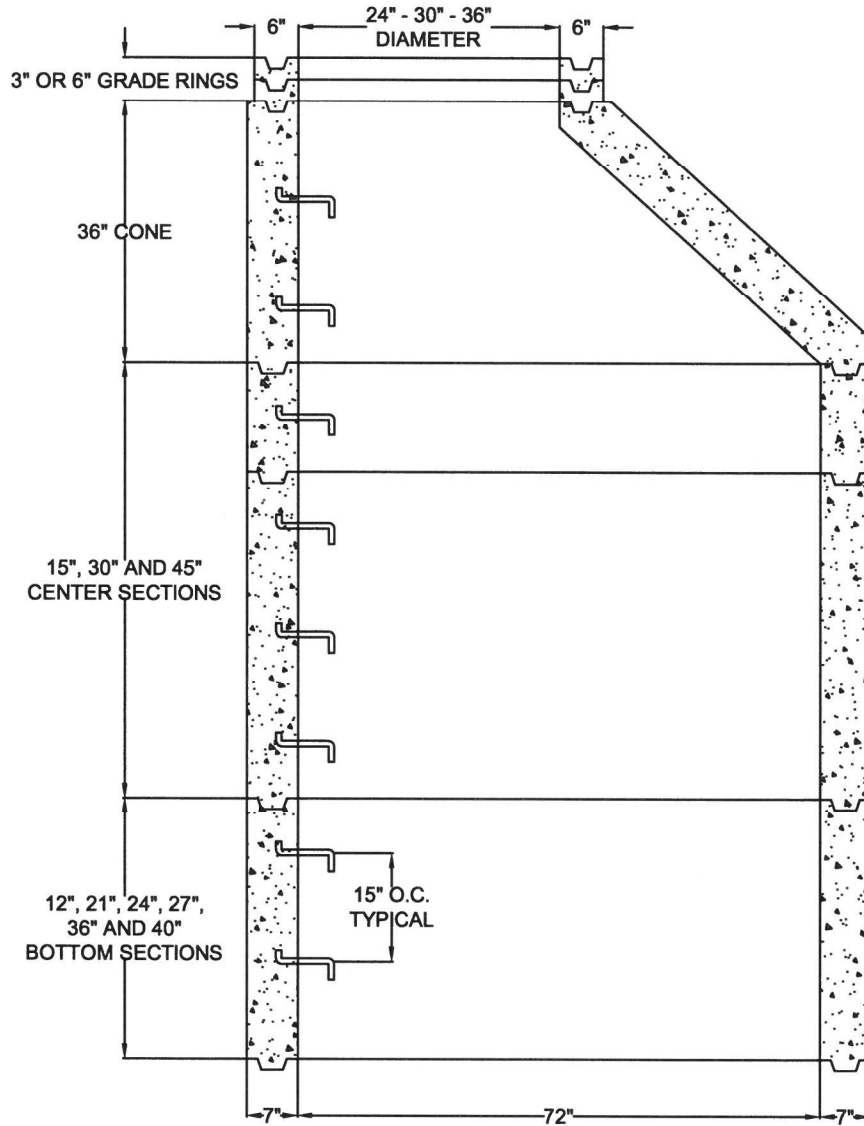


**72" ID - SHAFING & CONE DIAGRAM W/ GALVANIZED STEPS  
 .25" WIRE ON 3.27" C/L W/ 12 EA VERTICAL WIRE / EXCEEDS ASTM C-478  
 6 SACK TYPE II/V - 4000 PSI / 28 DAYS MINIMUM**



**JOB NAME:**

**MANUFACTURED BY  
 SOUTHWEST CONCRETE PRODUCTS**

**DESCRIPTION:** 72" I.D SHAFING & CONE 7" WALL  
 W/ 24" - 30" - 36" OPENING  
 W/ GALVANIZED STEPS

**DRAWING:** #SCP72GS

**DATE:**