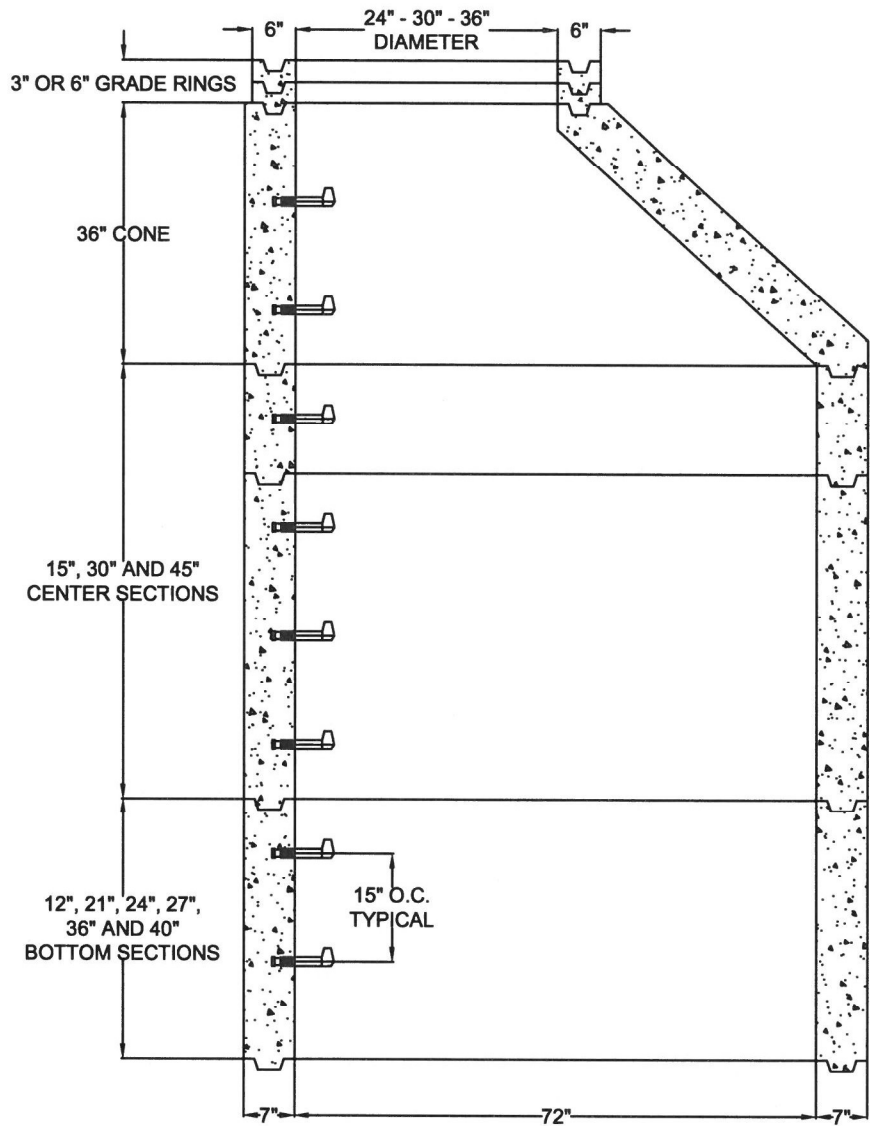


72" ID - SHAFING & CONE DIAGRAM W/ PLASTIC STEPS
.25" WIRE ON 3.27" C/L W/ 12 EA VERTICAL WIRE / EXCEEDS ASTM C-478
6 SACK TYPE II/V - 4000 PSI / 28 DAYS MINIMUM



JOB NAME:

**MANUFACTURED BY
SOUTHWEST CONCRETE PRODUCTS**

DESCRIPTION: 72" I.D SHAFING & CONE 7" WALL
W/ 24" - 30" - 36" OPENING
W/ PLASTIC STEPS

DRAWING: #SCP72PS

DATE: