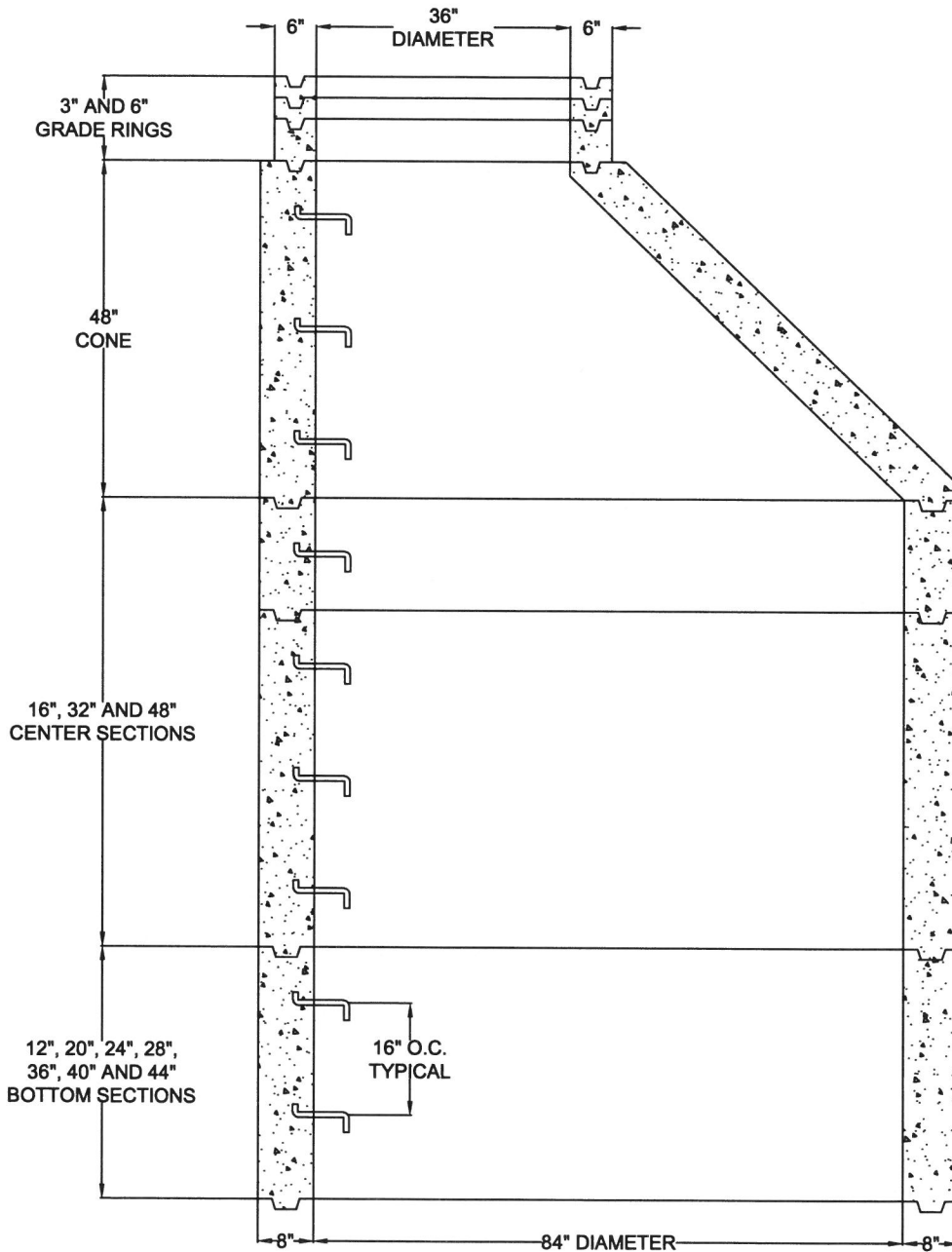


**84" ID - SHAFTING & CONE DIAGRAM W/ GALVANIZED STEPS  
 #6 REBAR 6" ON CENTER WITH 24 EACH #4 REBAR VERTICALS / EXCEEDS ASTM C478  
 6 SACK TYPE II/V - 4000 PSI / 28 DAYS MINIMUM**



<b>JOB NAME:</b>	<b>MANUFACTURED BY SOUTHWEST CONCRETE PRODUCTS</b>	
<b>DESCRIPTION:</b> 84" I.D SHAFTING & CONE W/ 8" WALL W/ 36" OPENING W/ GALVANIZED STEPS	<b>DRAWING:</b> #SCP8436GS	<b>DATE:</b>