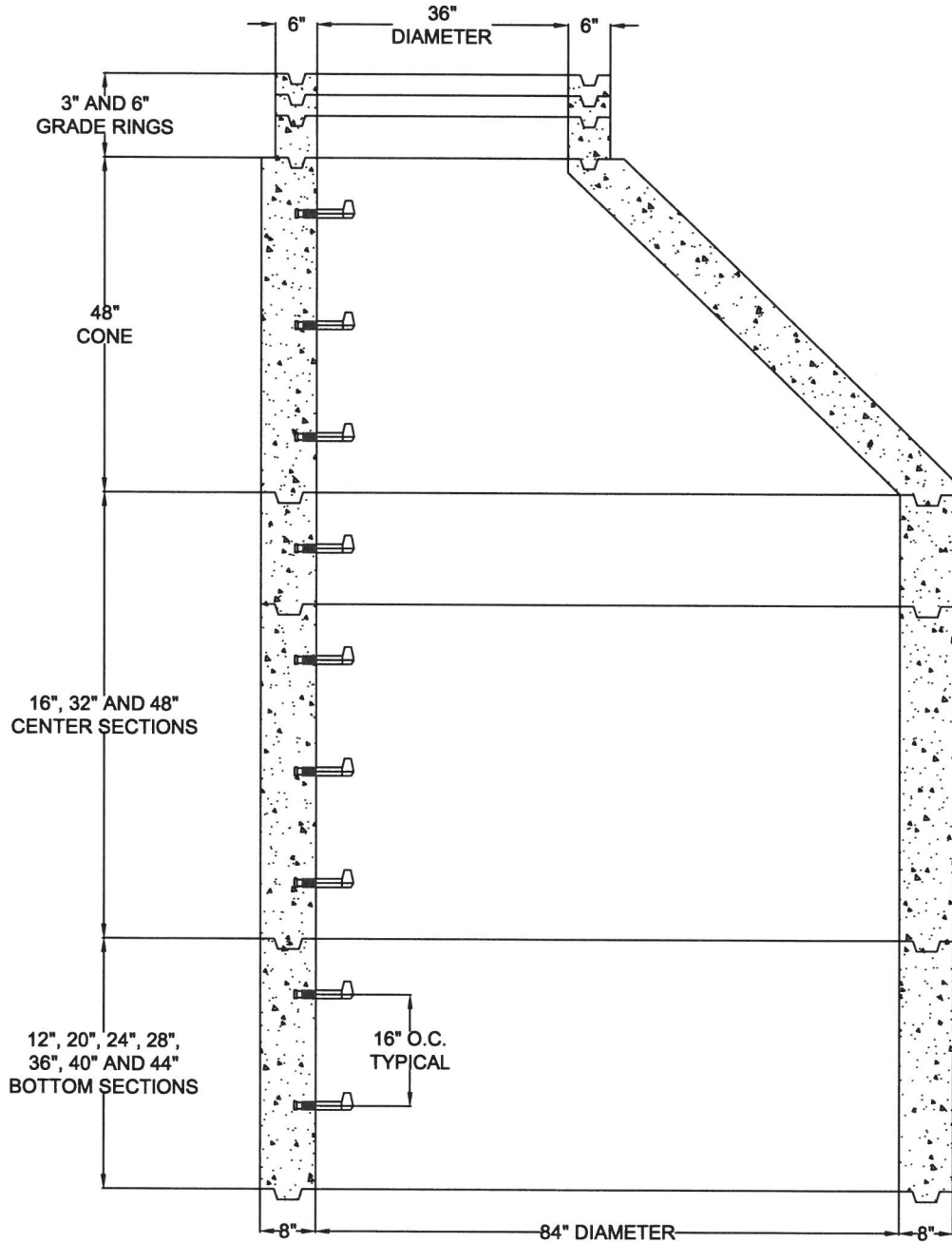


84" ID - SHAFTING & CONE DIAGRAM W/ PLASTIC STEPS
#6 REBAR 6" ON CENTER WITH 24 EACH #4 REBAR VERTICALS / EXCEEDS ASTM C478
6 SACK TYPE II/V - 4000 PSI / 28 DAYS MINIMUM



JOB NAME:

MANUFACTURED BY
SOUTHWEST CONCRETE PRODUCTS

DESCRIPTION: 84" I.D SHAFTING & CONE W/ 8" WALL
W/ 36" OPENING
W/ PLASTIC STEPS

DRAWING: #SCP8436PS

DATE: