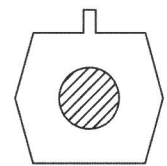
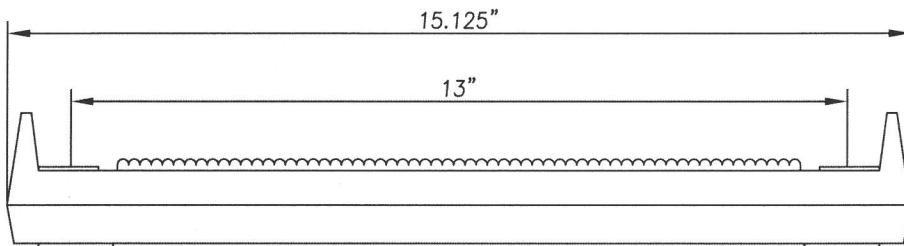
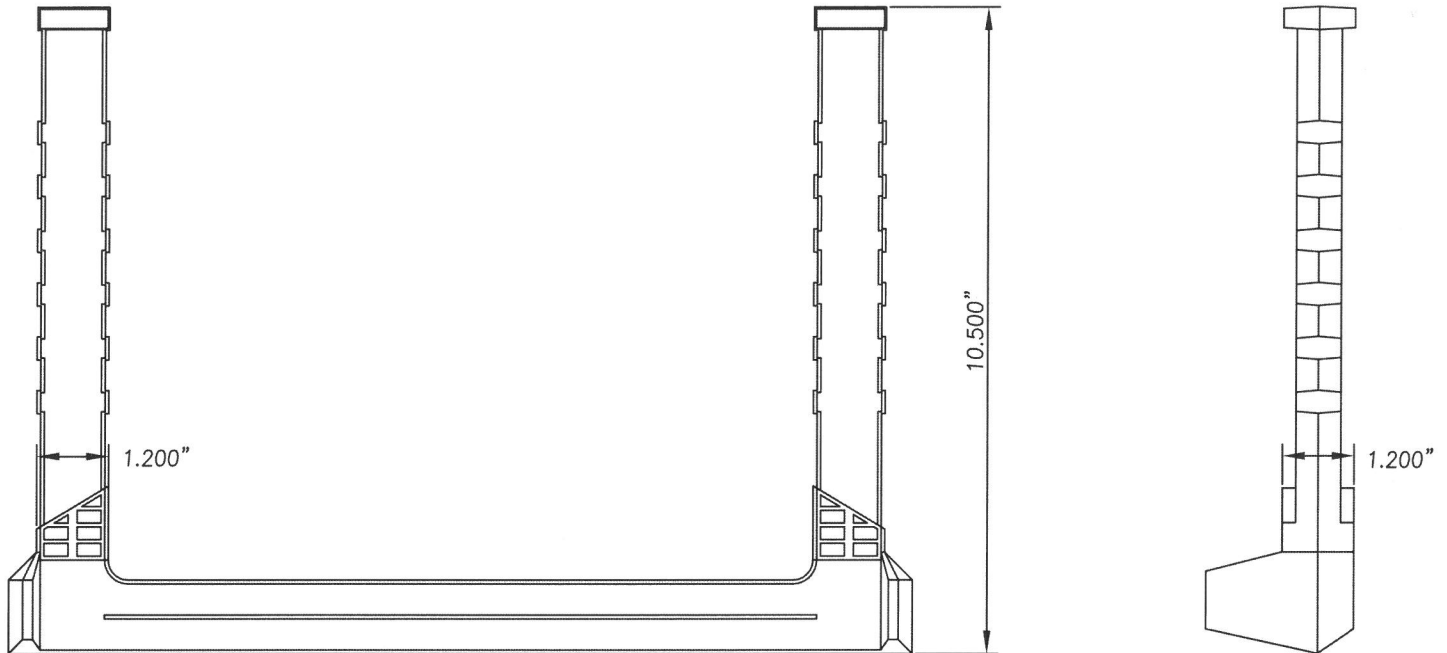


# STANDARD GRADE RING SAFETY STEPS



## SPECIFICATIONS

PLASTIC MATERIAL TO BE COPOLYMER POLYPROPYLENE PER STANDARD SPECIFICATIONS ASTM D-4101-98A.

REINFORCING STEEL BAR TO BE DOMESTIC CERTIFIED 1/2" COLD DRAWN STEEL, MINIMUM TENSILE STRENGTH 80,000 PSI PER ASTM A-82.

IN CONFORMANCE WITH ASTM C-478-97 SECTION 16.

SURFACE TO HAVE A LIGHT SANDBLAST LIKE FINISH.

## SAFETY

CAST-IN-PLACE. VIRTUALLY NO CHANCE OF LOOSE FIT OR ACCIDENTAL PULL OUT.

SAFETY END LUGS AND SCALLOPED SURFACE TO PREVENT FEET FROM SLIPPING OFF.

WILL NOT SPARK. WILL NOT IGNITE SEWER GAS.